



Since 1949

Ranchi Women's College

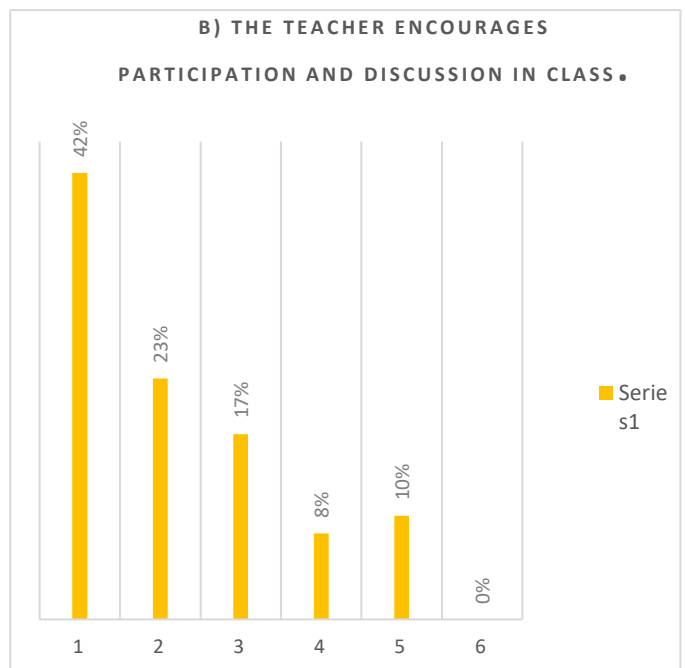
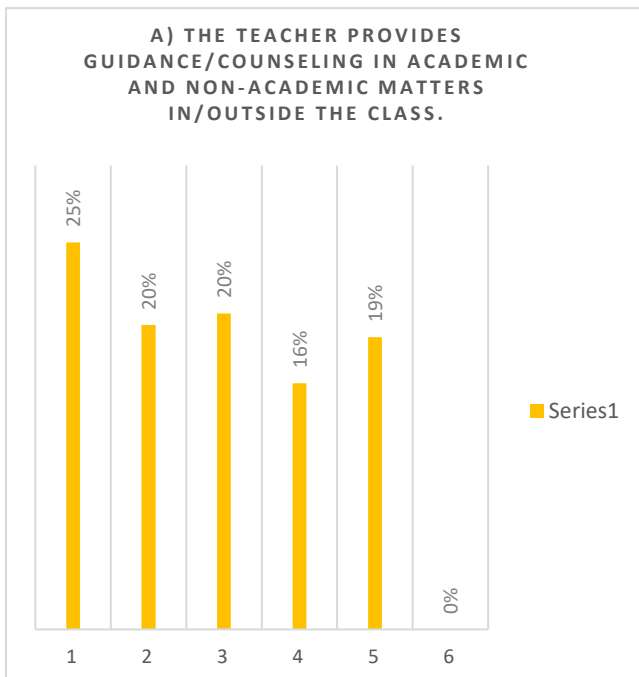
(A Constituent Autonomous College Under Ranchi University)

Ranchi - 834001

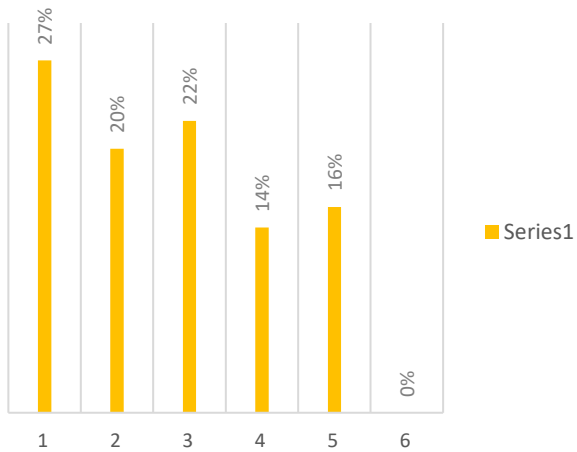
AQAR – 2022– 2023

Criterion II – Teaching Learning & Evaluation

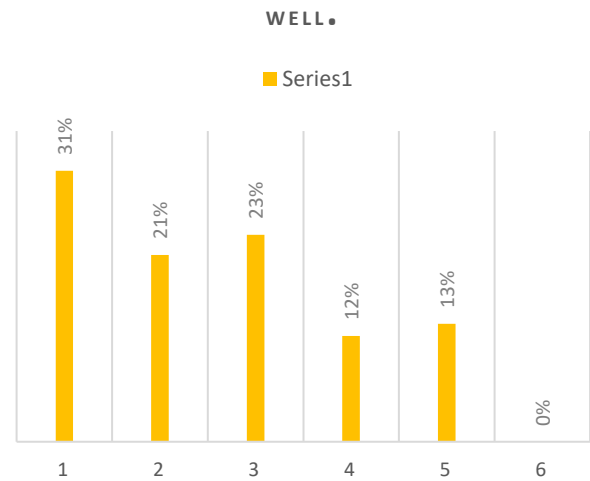
2.7 Student Satisfaction Survey



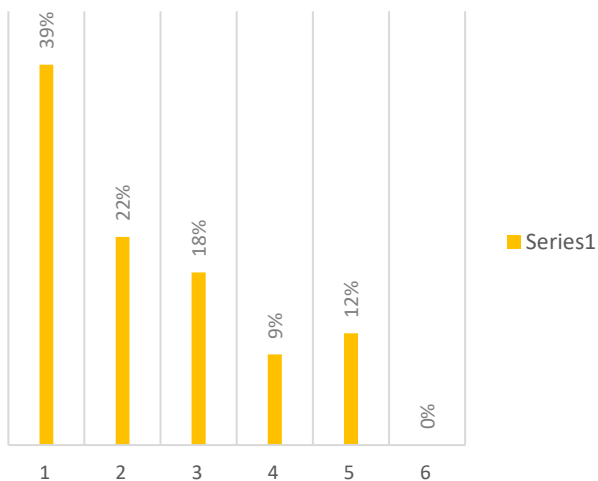
C) THE TEACHER USES MODERN TEACHING AIDS/GADGETS, HANDOUTS, SUGGESTION OF REFERENCES, PPTS, WEB RESOURCES, ETC.



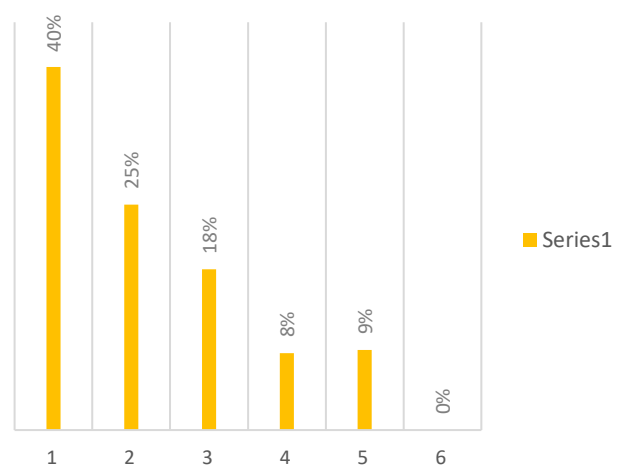
D) THE TEACHER PAYS ATTENTION TO ACADEMICALLY WEAKER STUDENTS AS WELL.



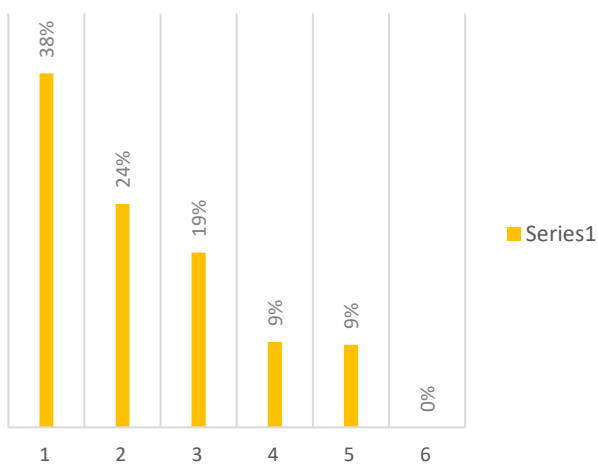
E) THE TEACHER IS REGULAR AND PUNCTUAL IN CLASS.



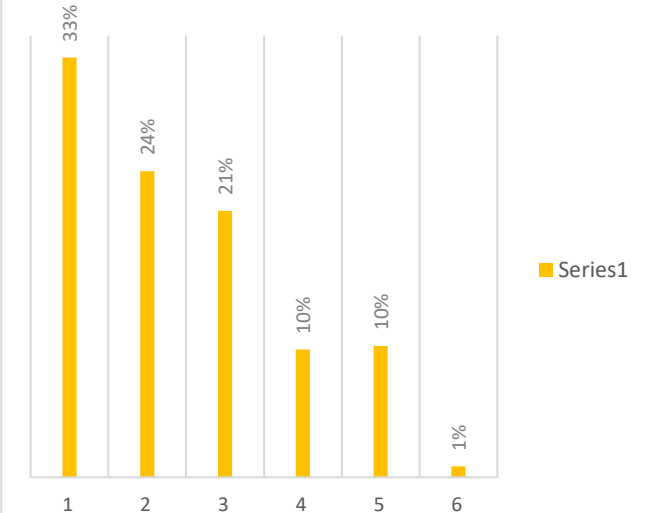
F) THE TEACHER INVITES OPINION AND QUESTIONS ON SUBJECT MATTER FROM STUDENTS.



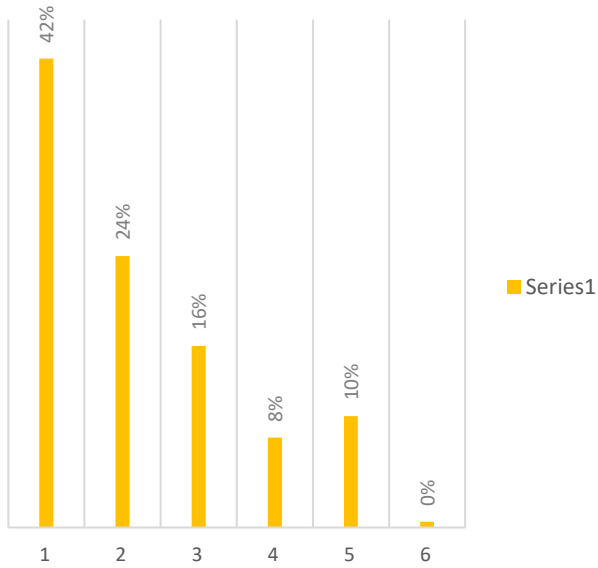
G) THE TEACHER INSPIRES STUDENTS FOR ETHICAL CONDUCT.



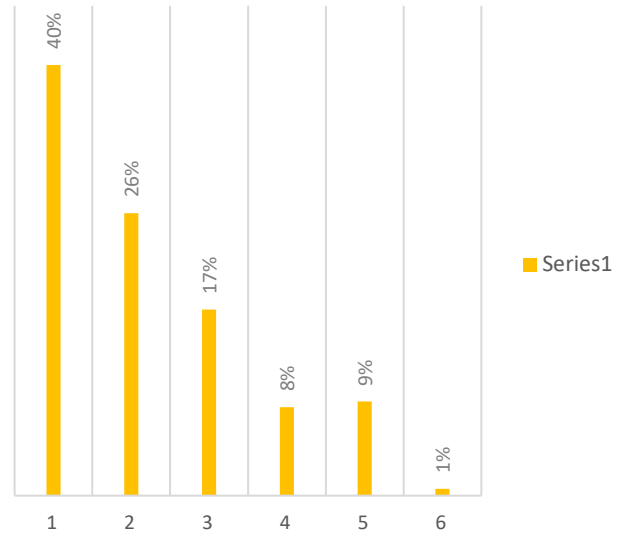
A) PERIODICAL ASSESSMENTS ARE CONDUCTED AS PER SCHEDULE.



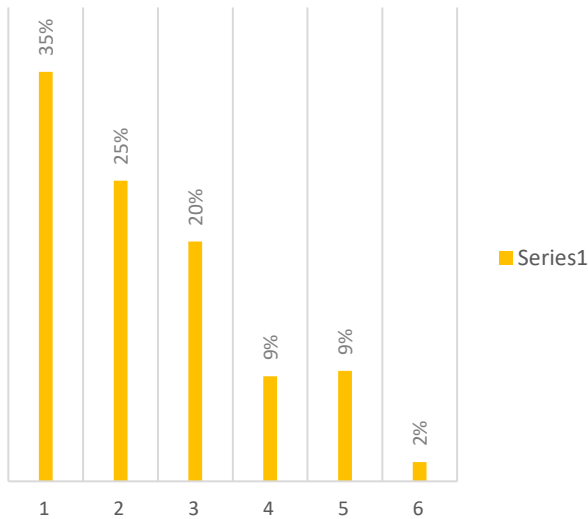
B) THE TEACHER COVERS THE ENTIRE SYLLABUS IN TIME.



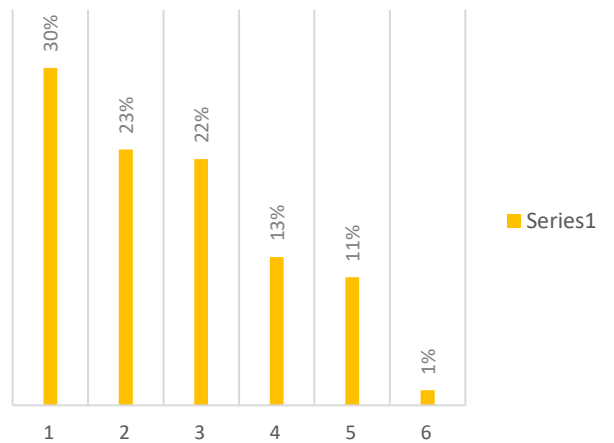
C) THE TEACHER EXPLAINS THE TOPICS EFFICIENTLY.



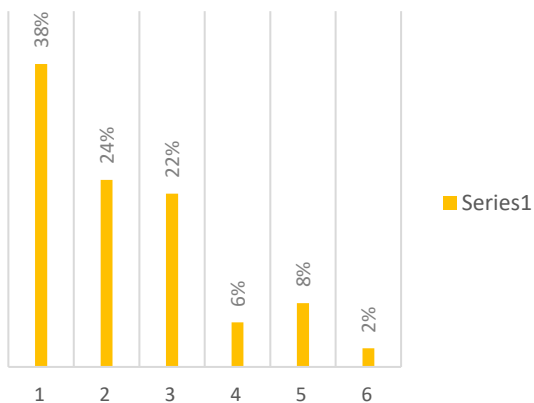
A) PERIODICAL ASSESSMENTS ARE CONDUCTED AS PER SCHEDULE.



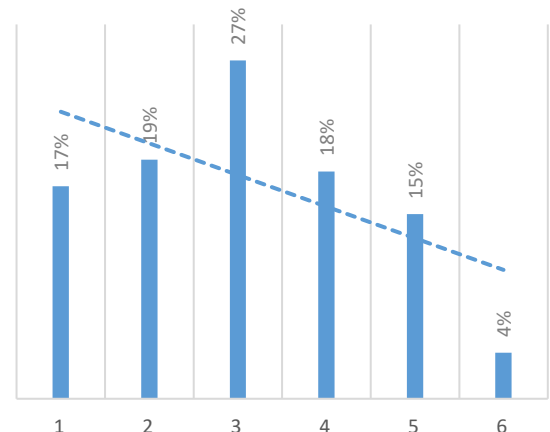
B) THE TEACHER USES NON-TRADITIONAL METHODS OF EVALUATION LIKE QUIZ, SEMINARS, ASSIGNMENTS, CLASSROOM PRESENTATIONS/PARTICIPATION (OR ANY OTHER METHOD).



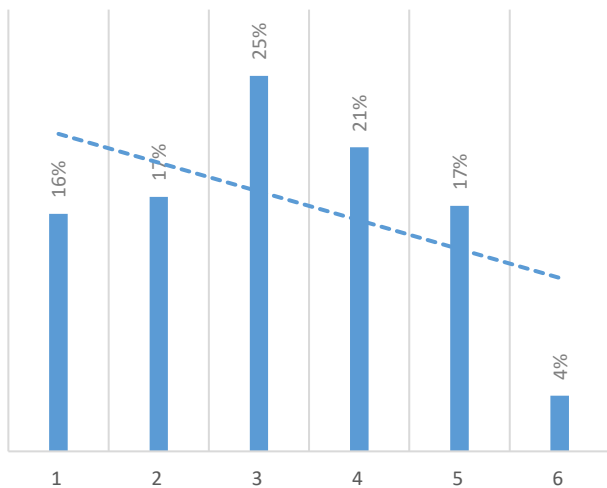
C) FOR BETTER ACADEMIC PERFORMANCE, DO YOU THINK YOU NEED?



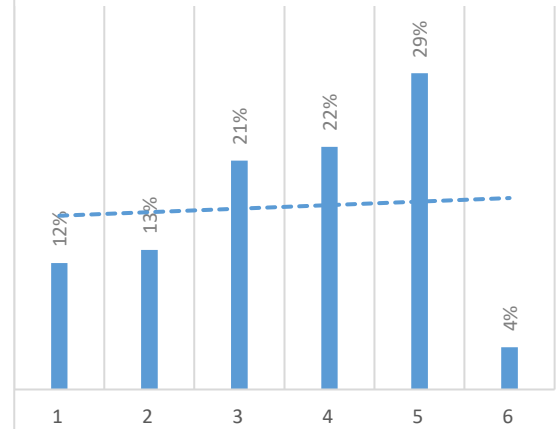
RANK THE FOLLOWING FACILITIES IN A SCALE BETWEEN 1 TO 5. 5- EXCELLENT 1-VERY POOR [SPORTS]



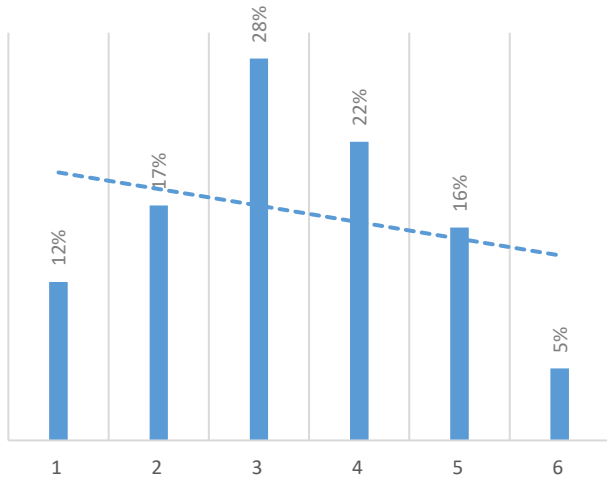
RANK THE FOLLOWING FACILITIES IN A SCALE BETWEEN 1 TO 5. 5-EXCELLENT 1-VERY POOR [EXTRA CURRICULAR ACTIVITIES]



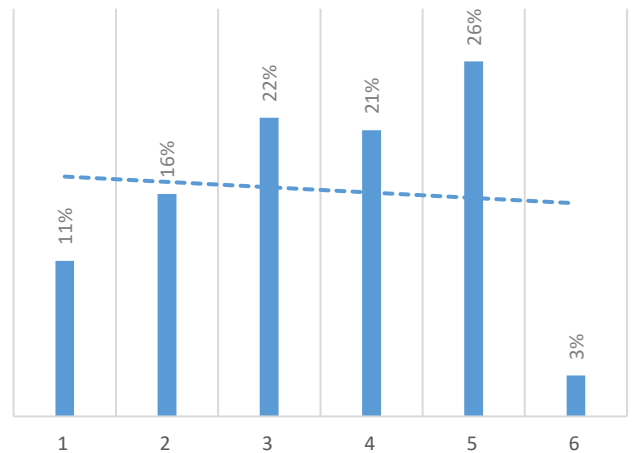
RANK THE FOLLOWING FACILITIES IN A SCALE BETWEEN 1 TO 5. 5-EXCELLENT 1-VERY POOR [DRINKING WATER]



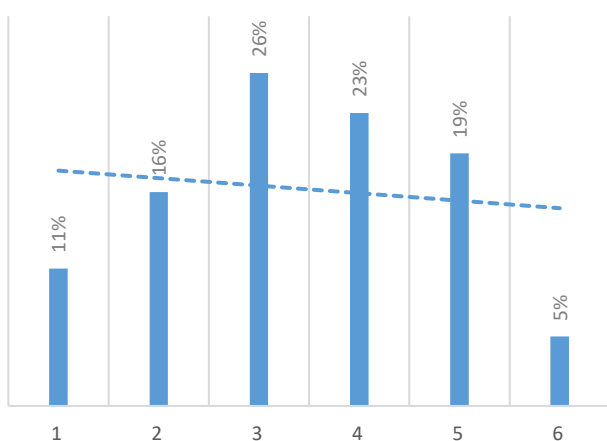
RANK THE FOLLOWING FACILITIES IN A SCALE BETWEEN 1 TO 5. 5-EXCELLENT 1-VERY POOR [FUNCTIONING OF GRIEVANCE REDRESSAL CELL]



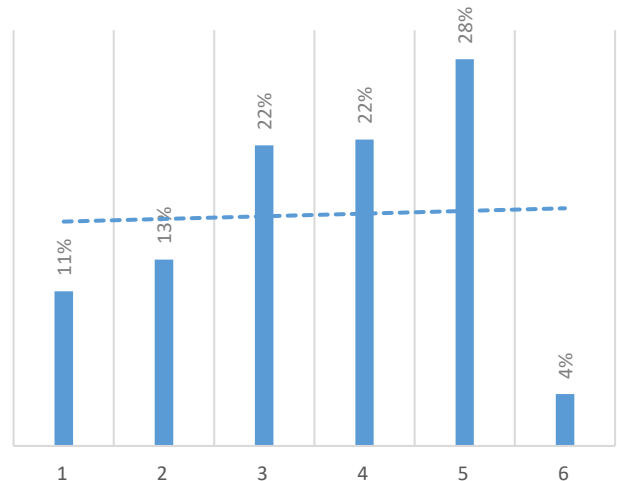
RANK THE FOLLOWING FACILITIES IN A SCALE BETWEEN 1 TO 5. 5-EXCELLENT 1-VERY POOR [CLEANLINESS AND MAINTENANCE OF CLASSROOMS]



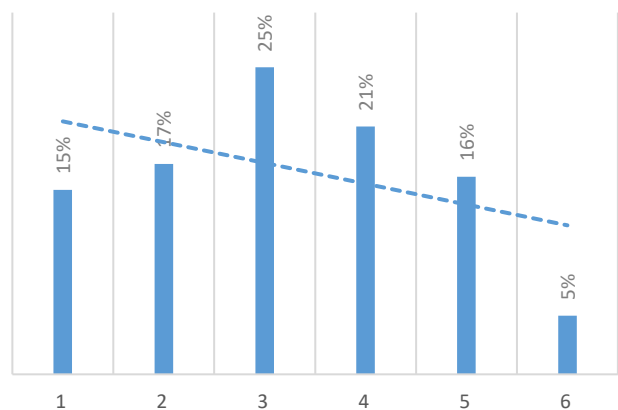
RANK THE FOLLOWING FACILITIES IN A SCALE BETWEEN 1 TO 5. 5-EXCELLENT 1-VERY POOR [FACILITY FOR DIFFERENTLY ABLED]



RANK THE FOLLOWING FACILITIES IN A SCALE BETWEEN 1 TO 5. 5-EXCELLENT 1-VERY POOR [WASHROOMS]



RANK THE FOLLOWING FACILITIES IN A SCALE BETWEEN 1 TO 5. 5-EXCELLENT
1-VERY POOR [FUNCTIONING OF PLACEMENT CELL]



Note:

5 = Excellent

4 = Good

3 = Average

2 = Poor

1 = Very Poor

OBSERVATION

Teaching and Learning

As per the feedback received from the students the college has an effective teaching learning system. The teachers are committed to provide academic and non-academic guidance and counselling within and off campus. However, a remarkable percentage (19 percent) of students are not very satisfied with the guidance received. The classes are made interactive in which participation of slow learners is emphasised. The usage of modern techniques like PPTs, quizzes, seminars, assignments, classroom presentations/participation by the teachers in making their lectures more effective has been acknowledged by majority of the students. It is apparent from the responses that the teachers are accountable and punctual in taking classes and finishing the syllabus within the time frame. The high positive response towards the ability of the teachers in explaining the assigned topics exhibit the proficiency of the teachers. Besides academics inculcating ethical values among the students is also thrust upon.

Evaluation

The responses reveal that the assigned syllabi are completed on time and assessments are made as per the schedule from time to time in order to assess the performance of the students. It may be inferred that the sessions are not delayed

Infrastructure

As per the feedback the Grievance Redressal Cell and the Placement Cells are quite active in addressing the needs of the students. Library resources are sufficient enough to cater to the needs of the teachers and students. Also, extra-curricular activities are taken care of for the overall development of the students. The conveniences for the differently abled are quite satisfactory.

As per the graphical illustrations majority of the students are not much satisfied with the infrastructure of the college like Sports, internet facilities, washrooms, drinking water, cleanliness and maintenance of classrooms.

ACTION TAKEN REPORT

On the basis of the feedback collected from the Students the following initiatives have been taken by the College.

It was decided that the complaint box placed in both the Arts and the Science blocks are to be opened every three months in order to look into the grievances of the students related to teaching and learning, evaluation, infrastructure or any other such grievance.

The teachers are to be encouraged to provide off campus guidance and counselling too both for academic and non-academic matters for the betterment of the students, as they rarely have free time during the college hours to give individual attention.

Students would be motivated to participate in quizzes and presentations in order to increase their participation. The classroom sessions are to be made more interactive and not merely lecture giving sessions. The study materials of the assigned topics are shared with the students beforehand so that there may be a healthy discussion between the teachers and students. Group discussions and debates have been encouraged. They are also to be encouraged to prepare MCQs on the topics taught.

The teachers would be encouraged to use ICT techniques for delivering lectures in an effective manner. Training programmes for the teachers would be organised by the IQAC to make them aware of the recent techniques.

There is no permanent physical education teacher in the College. The one appointed in the department of Education has been taking care of the sports activities when required. Therefore, the sports activities are not very regular. A requisition has been sent to the University for a full-time teacher for the purpose.

It has been made mandatory for the students and teachers to register for INFLIBNET. A Library period has been allotted in the routine.

Wi-fi facility has been strengthened in both the campuses. New BSNL connection has been taken for the Science Block.

In order to facilitate safe drinking water facility in the campuses AMC has been taken for the maintenance of the water purifiers. A new borewell has been dug in the Arts block.

The teachers are required to ensure that tutorial and revision classes are held to address the issues of the slow learners.

An attempt would be made to strengthen the infrastructure. Particular attention is to be paid to the hygiene of the campus. Cleaning staff have been appointed to make the campus clean. The washrooms are to be cleaned thrice a day. The classrooms are to be kept clean before the classes begin and it is to be ensured that these are cleaned after the students leave.

In order to deal with the punctuality and accountability of the teachers at the first step warning is given to the defaulters by the Principal and the senior members of the IQAC. In the second step after few months of warning Principal takes feedback from the students of different departments to sort out problems like late coming in the class, not explaining topics properly and not completing syllabus timely.